



ADCH

Together for Dogs & Cats

CONFERENCE

2024

Event Programme



14th – 15th May 2024
Telford International Centre

Coming soon

**Activate 4 Weeks
Free cover for
adopters
...paper-free!**

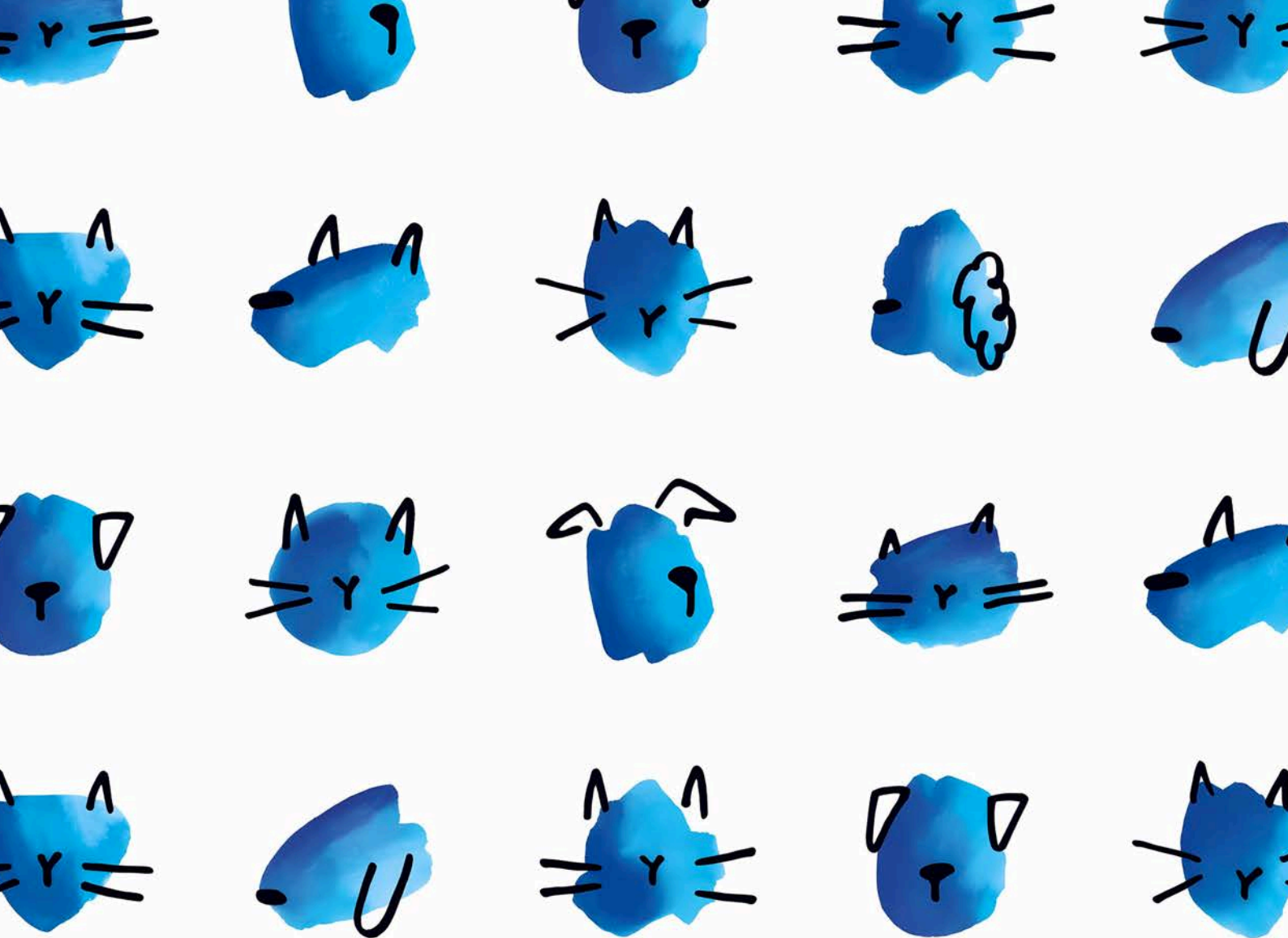


Come and **visit the team** at our stand

Contents

5	Warm Welcome
6	Before You Arrive
7	Event Information
8	Tuesday 14th May
10	Petplan & ADCH Animal Charity Awards
12	Wednesday 15th May
15	Session & Speaker Information
29	Exhibition Area Map
30	Sponsors
31	Sponsor Passport
31	Exhibitors
32	Venue Layout Map

#ADCH2024



BATTERSEA

COULD WE HELP MORE ANIMALS TOGETHER?

GRANTS

As a funder, we support organisations and projects to do great work that advances our shared vision and mission.

ACADEMY

Battersea Academy is here for every dog and cat professional with a range of online and in-person learning opportunities.

PARTNERSHIPS

We work with organisations to support intake and rehoming, including breed rescues and working animal programmes.

VISIT THE BATTERSEA STAND TO FIND OUT MORE

Warm welcome from ADCH Executive Director



Welcome to the 2024 ADCH Annual Conference!

We extend a warm greeting to all our valued delegates, sponsors, exhibitors, and supporters. Your presence at this year's sold-out conference is truly appreciated.

As we gather for this eagerly anticipated event, we are reminded of the incredible passion and dedication that unites us under the banner 'Together for Dogs and Cats'. Whether you're a seasoned attendee, or experiencing the ADCH Conference for the first time, we extend a heartfelt welcome to each of you.

This year holds special significance for me as it marks my first ADCH Conference. I am honoured and excited to join such a vibrant community, and I look forward to meeting you and hearing about your experiences and insights firsthand.

To our members, your dedication and commitment are truly commendable. In the face of immense challenges, you have remained steadfast in upholding animal welfare standards, showing unwavering compassion and determination. Thank you for everything you do to improve the lives of dogs and cats, and importantly, for supporting one another.

Throughout the conference, we have assembled a wonderful and diverse lineup of speakers and exhibitors who will share their expertise and experiences, providing invaluable opportunities for learning and networking. Full details are included within this brochure.

Join us on Tuesday evening as we celebrate the exceptional dedication and achievements of individuals and teams in our sector at the Petplan & ADCH Animal Charity Awards. As we honour outstanding contributions, we're reminded of the collective impact our community has on improving the lives of animals. We look forward to an evening of celebration, networking, and cheer.

We are deeply grateful to our sponsors, exhibitors, volunteers and speakers whose generosity and commitment make this event possible. Special thanks to Petplan, Battersea, Cats Protection, Dogs Trust, RSPCA, Woodgreen Pets Charity, Mars Petcare and Birmingham Dogs Home for their sponsorship and ongoing support. Please make sure to take the time to visit the exhibition stands; everyone here is eager to understand the needs of our sector. Don't forget to get your passport stamped at each stand for free entry into our prize draw. For a complete list of our sponsors and exhibitors, please refer to pages 30-31.

As we embark on this journey together, let us embrace the spirit of collaboration and camaraderie that defines the ADCH community. May this conference be a catalyst for new ideas, innovation, partnerships, and initiatives that will further our collective aim of improving the lives of dogs and cats.

Thank you for joining us; we look forward to two days of engaging discussions, meaningful connections, and shared inspiration. I look forward to meeting you.

Warm regards,

A handwritten signature in black ink that reads 'Becky'.

Rebecca Cooper (Becky)
Executive Director
rebecca@adch.org.uk

#ADCH2024

**Get involved on social media
and share your Conference
experience with our hashtag!**

Before you arrive

Venue and parking

We're excited to host you at Telford International Centre, International Way, Telford, Shropshire, TF3 4JH.

There are over 1500 car parking spaces onsite, all within easy walking distance of the venue. There are no charges to park. Delegates should use Gate A, parking on car park 2. Enter the building via entrance E3.

Travelling by rail

For those arriving by train, Telford Central Station is just over a mile away from the venue, making it a short 15-minute walk or a quick two-minute taxi ride. A frequent bus service runs from the train station directly to The Telford International Centre.

What to wear

We believe in creating a relaxed and inclusive atmosphere. There's no formal dress code for the conference or pre-conference events, so feel free to dress in a manner that reflects your personal style and comfort. Whether it's branded workwear, business attire, or casual jeans, you'll fit right in.

However, for the Petplan & ADCH Animal Charity Awards, we invite you to embrace the occasion and celebrate in style. Cocktail attire is recommended for this celebratory event.

First time attendee

If this is your first ADCH Conference and you have questions or would like guidance on what to expect, we're here to help. Email events@adch.org.uk with your contact number, and a member of our team will be delighted to provide any information you may need.

Pre-Conference Event

Kick off the conference early at our pre-conference networking event! An evening dedicated to networking, optional pizza indulgence, and loads of fun to warm you up for the main event.

While attendance at the pre-conference networking event is complimentary, we're also offering a pizza buffet option for £7.00 +VAT per head.

Please note: Advance booking is essential as there won't be any option to purchase tickets at the door.



Scan the QR code or [click here](#) to book tickets for our pre-conference event

Event Lanyards

Lanyards will be provided upon registration. All participants are required to wear their lanyard when attending sessions and when entering the exhibition area. If you lose your lanyard, please email us at events@adch.org.uk

Lunch and Refreshments

This year, tea, coffee, lunch and refreshments have been kindly sponsored by AVID MicroChips & PETtrac Database.

All lunch and refreshments will be served during the official breaks in Hall 3, which can be found next to the exhibition area on the ground floor.

Mobile Phones

As a courtesy to speakers and other delegates, all mobile phones and electronic devices should be switched to silent mode before entering sessions.

Smoking

Smoking, including e-cigarettes, and vaping, is not permitted anywhere within Telford International Centre. Outdoor designated smoking areas are clearly signposted.

Photography Consent

Photographs of the sessions, social events, and exhibition areas will be taken throughout the conference for use on the ADCH website, social media platforms and other marketing materials. If you do not wish to be photographed, please inform a member of ADCH staff or email us at events@adch.org.uk

Security and Safety

Bags, luggage and other personal items can be stored in the cloakroom on the ground floor. The cloakroom is unsupervised, so any items will be left at your own risk.

Please do not leave bags or other personal items unattended in any of the session halls.

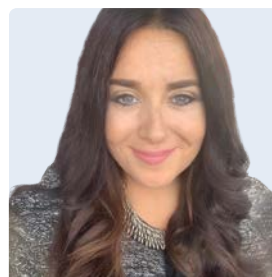
Contact Us

For any issues, changes or urgent matters during the event, please see a member of the event team or email:

events@adch.org.uk

If you are a speaker, sponsor or exhibitor, please email:

therese@adch.org.uk



Rebecca Cooper
Executive Director

Meet the ADCH team



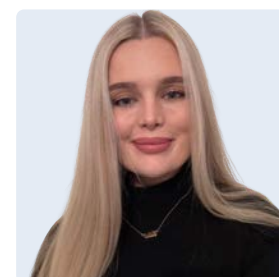
Thérèse Carr
Member &
Administration Manager



Clare Radlett
Standards &
Operations Officer



Emily Sockett
Training & Assessment
Manager



Ellie Roche
Administrator

Event Information

Our Trustees

ADCH is overseen by a Board of Trustees, all of whom generously volunteer their time, expertise, and support. The team would like to express their sincere gratitude for their significant contribution to the success of this conference.



Scan the QR code or [click here](#) to learn more about our Board of Trustees

Tuesday 14th May

DAY ONE OVERVIEW

09:00 – 09:45	Foyer	45 minutes Registration (refreshments in Hall 3)
09:45 – 10:10	Ironbridge	25 minutes ADCH Opening address
10:10 – 10:50	Ironbridge	40 minutes Kryus Ltd Keynote Speaker Training UK Ecology Detection Dogs – harnessing dogs’ natural abilities to provide a ground breaking survey method
10:50 – 11:10	Hall 3	20 minutes Networking break
11:10 – 12:10	Ironbridge	60 minutes ADCH Regional catchups
12:20 – 13:00	Ironbridge	40 minutes RSPCA and Cooper & Co Solicitors Exploring the impact of the XL Bully ban on the rescue sector
	Beckbury	40 minutes International Cat Care The uncomfortable pet – the identification and management of the ‘inbetweener’ cat
13:00 – 14:00	Hall 3	60 minutes Lunch & networking
	Pattingham	60 minutes Woodgreen Pets Charity Pre-booked session Let’s talk about small pets – striking a balance when rehoming
14:00 – 14:40	Ironbridge	40 minutes Association of Pet Behaviour Counsellors Why punishment doesn't work
	Wenlock	40 minutes Woodgreen Pets Charity Designing support services for pet owners through co-creation
	Beckbury	40 minutes Cats Protection Scientific advances in cat welfare from individualised care to population management

14:50 – 15:30	Ironbridge	40 minutes EF Training Recognising and responding to compassion fatigue
	Wenlock	40 minutes Rachel Bean Emergency first aid – in rescue
	Beckbury	40 minutes RSPCA Manchester and Salford Branch To pair, or not to pair: cat is the question!
15:30 – 16:00	Hall 3	30 minutes Networking break
15:30 – 16:40	Pattingham	70 minutes ADCH Invitation only ADCH Volunteer Assessors' workshop
16:00 – 16:40	Ironbridge	40 minutes Cats Protection Challenges to the sector – how does the rescue sector appeal to the next generation of pet owners?
	Wenlock	40 minutes Mars Petcare & Battersea Pet friendly properties – what challenges remain?
	Beckbury	40 minutes Birmingham Dogs Home, Oxfordshire Animal Sanctuary & Hope Rescue Protecting your rescue
16:50 – 17:00	Ironbridge	10 minutes ADCH Closing remarks



Petplan & ADCH
Animal Charity
Awards
2024



Congratulations and good luck to all of this year's finalists.

Volunteer of the Year



Michael Johnson,
Cavy Corner Guinea Sanctuary



Nick Munro,
Dogs Trust



Fran Davies,
Cats Protection

Employee of the Year



Cicely Parsons,
Teckels Animal Sanctuaries



Tracy Millington,
JSPCA



Sharon Prior,
Dogs Trust

Team of the Year



**Margaret Green Animal
Rescue Wingletang**



Lulubells Rescue



Leicester Animal Aid

We look forward to celebrating all the finalists and announcing the winners on Tuesday 14th May from 7pm.

Petplan & ADCH
Animal Charity
Awards
2024



Tuesday 14th May

7pm Drinks Reception, Entrance 3
7.30pm Dinner and Award Ceremony,
Ironbridge room

Awards will be followed by live music and dancing

Carriages at Midnight

Dress code: Cocktail Attire

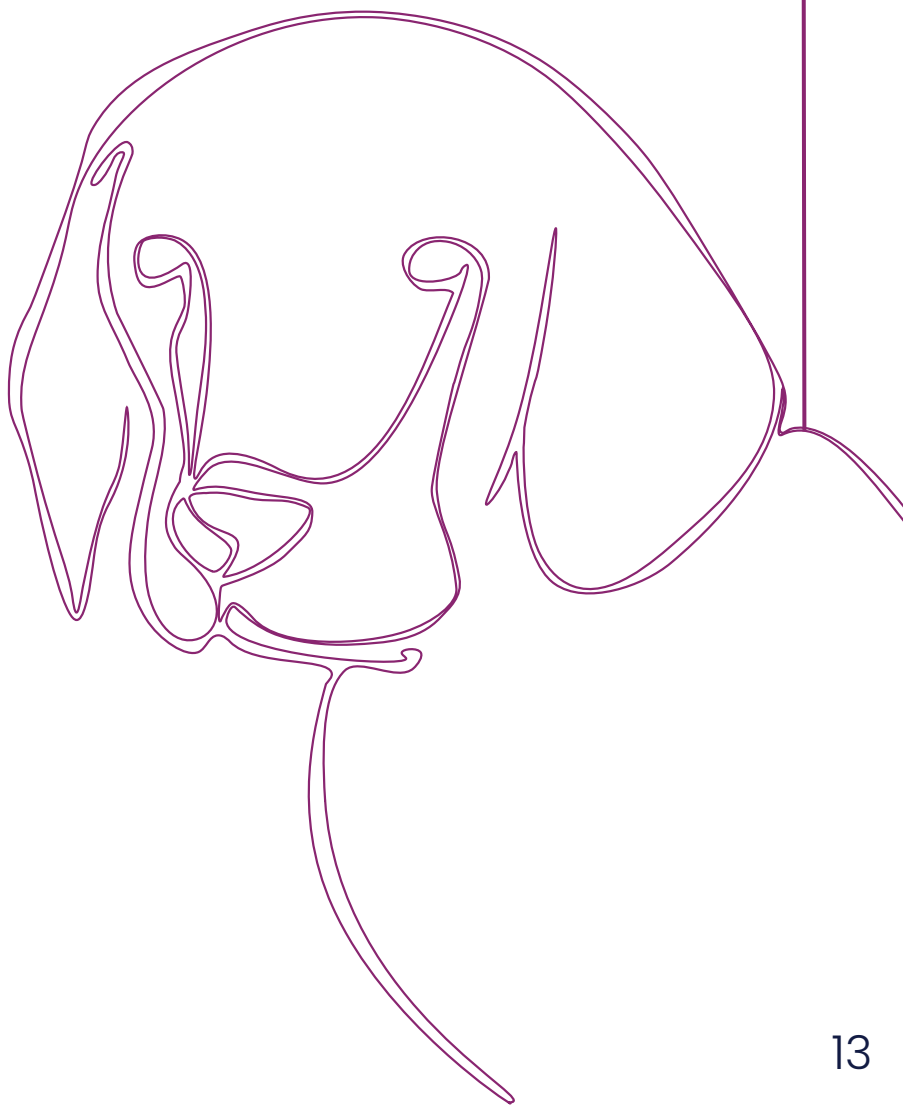
Please note: Bar is card only

Wednesday 15th May

DAY TWO OVERVIEW

09:00 – 09:30	Foyer	30 minutes Registration
09:30 – 09:40	Ironbridge	10 minutes ADCH Opening address
09:40 – 10:20	Ironbridge	40 minutes Battersea & Cats Protection Keynote Speaker Licensing and beyond: the legislative challenges facing rescues
10:30 – 11:10	Ironbridge	40 minutes Woodgreen Pets Charity, Blue Cross, USPCA, RSPCA, PDSA, Dogs Trust & Cats Protection Pet Education Partnership
	Wenlock	40 minutes Dogs Trust Meeting a dog's needs in a kennel environment
	Beckbury	40 minutes Cats Protection Unlocking the secret formula that sets cats up to succeed
11:10 – 11:40	Hall 3	30 minutes Networking break
11:50 – 12:30	Ironbridge	40 minutes Blue Cross, Saints Sled Dog Rescue & Causeway Coast Dog Rescue Changing environments – exploring different models of rehoming
	Wenlock	40 minutes Dogs Trust & RSPCA Euthanasia: how to make difficult decisions based on fact not emotion
	Beckbury	40 minutes The Sheffield Cats Shelter Working with cats in our community

12:40 – 13:20	Ironbridge	40 minutes Dogs Trust and RSPCA Shelter metrics: how to get the most throughput in your shelter and increase your rehoming
	Wenlock	40 minutes Battersea Is the sector professional and sustainable? Presenting the research findings
	Pattingham	40 minutes Newcastle Dog & Cat Shelter Fundraisers' Forum
13:30 – 13:50	Ironbridge	20 minutes Closing remarks and prize draws
14:00 – 15:00	Hall 3	60 minutes Lunch and networking
15:00	CLOSE	



Our Community Team



Working with communities to provide a better future for dogs.

Do you want to make an impact on dog welfare through further understanding the needs of your local community?

Our team of Community Engagement Officers are working in key areas across the UK, engaging regularly with diverse communities to identify significant dog welfare issues and signpost owners to existing Dogs Trust interventions. By working together with your organisation, we believe we can support more owners to enrich their dog's lives and avoid unnecessary relinquishment.



Here's where we need your help!

We need your support to develop a collaborative understanding of region-specific dog welfare issues to achieve real change for dogs and their owners. We believe, in turn, that this will help to provide increased support to more dogs and the people that love them.

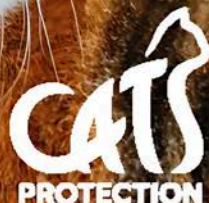
To find out more about how we can work together, visit our Dogs Trust stand or email us at Community.engagement@dogstrust.org.uk

A dog is for life®

©Dogs Trust 2024 Registered charity numbers: 227523 & SC037843

Making a better life for cats, because life is better with cats

cats.org.uk



Cats Protection is a registered charity 203644 (England and Wales), SC037711 (Scotland) and is listed as a Section 167 Institution by the Charity Commission of Northern Ireland. | CAMP 1577



Sessions & Speakers



Sian Parry | Kryus Ltd

Training UK Ecology Detection Dogs – harnessing dogs’ natural abilities to provide a groundbreaking survey method

In this session, delegates will delve into the realm of Ecology Detection as a suitable path for high drive dogs. Attendees will gain insight into the invaluable role dogs play in ecology surveys, giving increased assurance on searches.

The presentation will briefly look at the changes in nature over recent years and its impact on our world. Then a whistlestop tour of some projects the dogs have been involved in and the difference they are making around the UK.

Sian will introduce the KONG training system for passive indications, and how we teach problem solving & search patterns through positive reinforcement (R+), harnessing the dogs’ natural abilities. Environmental and social training methods will also be explored, to demonstrate the holistic approach to each dog’s welfare in preparing them for many diverse situations.

The importance of providing a “normal” home life for these working dogs is emphasised, as well as the specialised role of handlers who possess the knowledge and understanding of both canine behaviour and the natural world.

In conclusion, Ecology Detection emerges as an enriching endeavour for dogs, fostering natural behaviour and facilitating participation in expert inter-species teams, working closely with their human to help protect the natural environment.

ADCH Member Engagement Committee

ADCH Regional catch-up

This is an opportunity to engage in discussions with other individuals across your region to discuss prevalent local challenges and explore avenues for collaborative action.

This workshop offers a platform to exchange ideas, foster collaboration and discuss solutions alongside your peers.



Samantha Gaines | RSPCA
Trevor Cooper | Cooper & Co Solicitors

Exploring the impact of the XL Bully ban on the rescue sector

Following a series of serious and fatal dog bite incidents, the XL Bully is now the fifth type of prohibited dog in England, Wales and Scotland with Northern Ireland soon to follow suit. Whilst the ban achieved cross-party political support, it faced serious opposition and challenge with concerns raised about its impact on a variety of sectors, dog welfare and human wellbeing.

With the ban now being enforced in England and Wales and implemented in Scotland, we are starting to see its effect. Of significant concern is the sheer number of dogs affected, with recent figures suggesting that the number of dogs exempted in England and Wales is over 55,000. Not only is the number far greater than the UK Government’s original estimate of 10,000, it is clear that the ban’s impact will also be far greater than had been anticipated.

This session will provide a summary of the legislation across the four devolved nations as well as an overview of its impact on owners, dogs, the veterinary sector and enforcement agencies. We will then invite attendees to take part in a discussion exploring the ongoing issues affecting the rescue sector and potential solutions.

**A kinder world
for animals
needs **all kinds.****



Adopt. Volunteer. Support.

RSPCA  **FOR
EVERY
KIND.**

rspca.org.uk



Sessions & Speakers

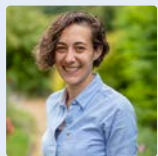


Vicky Halls | International Cat Care

The uncomfortable pet – the identification and management of the 'inbetween' cat

Have you had cats in your care that came from pet homes but stay with you for very long periods of time, because they are non-responsive, hide away, or are fearful and as such don't appeal to adopters?

Most homing organisations have worked with cats that have been relinquished by their owners because they have failed to meet their expectations of how pet cats should behave. These cats may then be adopted and subsequently returned, as they have failed to settle. Many thousands of cats like this exist all over the world. They are often confined for long periods, awaiting forever homes that never materialise. This presentation gives those cats a voice as 'the inbetween' and provides ways of ensuring their needs are met through exploring 'alternative lifestyles'. Having a clear process for the identification and management of inbetweeners has the potential to reduce the average length of stay within your homing organisation and dramatically increase the welfare of these misunderstood cats.



Natalie Powdrill-Wells | Woodgreen Pets Charity

Let's talk about small pets – striking a balance when rehoming (pre-booked session)

Join Team Woodgreen for the opportunity to discuss one of the biggest challenges for organisations rehoming smaller species: finding homes for pets efficiently whilst ensuring that adopters can appropriately provide for their needs.

When rehoming a small pet, adopters are usually expected to evidence the accommodation they can provide, but when it's easy to buy a small pet from a source with less stringent checks, rescues can easily miss out on much needed homes. The requirements are frequently seen as 'gold standard' by the general public, despite rescues asking for the minimum sizes supported by science and recommended by animal welfare groups. Compromising on accommodation standards risks perpetuating the traditional view that small animals need small places, but not rehoming efficiently means that many other small pets spend months on waiting lists in environments where their welfare may be severely compromised. It's difficult to know how to approach this challenge: how much flexibility should we offer in our rehoming requirements for small pets and when should we stand our ground. Longer term, we need to see broader changes, such as easily accessible, appropriately sized accommodation, but until this time such challenges will remain. This session provides the opportunity to explore this dilemma with others in the sector and to consider potential solutions.



Chris Bennett | Woodgreen Pets Charity
Vicky Drummond | Woodgreen Pets Charity

Designing support services for pet owners through co-creation

Co-creation and co-production theories recognise that the people with lived experience are often best placed to advise on what support and services will make a positive difference to their lives. Through using co-creation techniques and engaging the people using these services at the earliest stages of service design, development and evaluation services ensures that we can deliver the services that really meet their needs.

At Woodgreen our mission is to protect pets today and prevent suffering in the future so that pets can live a healthy and fulfilling life with their people. While addressing immediate pet crises is paramount, the root causes lie upstream in the choices, actions and inactions of pet owners, which have significant potential to escalate into crises over time. Addressing these early lifecycle behaviours and attitudes is just as vital as treating them when they occur, as prevention is better than cure. Our research and experience tell us the majority of pet owners have the best intentions for their pets, however, knowing what is best for their pet and being able to act on it can be challenging for owners for a myriad of reasons.

This presentation will discuss how we have used co-creation methods in the design of our exciting new digital and community services, recognising the value of bringing our customers into our service design process; to work with us, to explain where their experience fell or falls short, what needs they have, and how we can work together to facilitate better actions and behaviours for pet care.

*Nugget and
Stephen*

**Everything we do is
about helping pets
*and their people.***

As well as finding pets loving
new homes, we're here for
owners at every step of the
pet ownership journey.

Come and chat to us, or visit
woodgreen.org.uk to find out
more about our work.



woodgreen

Woodgreen Pets Charity Registered Charity Number 298348 O1686KSO424



WE'RE WITH YOU EVERY STEP OF THE WAY

Become a PRO Club Partner today to unlock*

- > Bespoke nutrition for Rescue Centres
- > Recommendation scheme
- > Dedicated Area Business Manager
- > Exclusive prices and offers
- > PRO Club Loyalty Scheme
- > Tailored Education and more...



To find out more about our PRO Club scan the QR code to visit **pro.royalcanin.co.uk**
or call **0330 678 1522 (UK) (01) 267 8260 (ROI)**

*Subject to meeting our application criteria. Please visit pro.royalcanin.co.uk for full T&Cs. ©ROYAL CANIN® SAS 2024. All rights reserved.



Sessions & Speakers

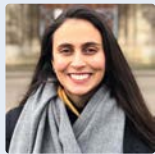


Anne McBride | Association of Pet Behaviour Counsellors

Why punishment doesn't work

'Punishment' – a word not used in 'polite society'. Surely good owners and professionals do not use punishment. Whilst I do not condone using methods that instil pain or fear, it is a myth to suggest that training is 'force-free'; or 'positive only'. Positive reinforcement (reward) methods (e.g. clicker training) use punishment, albeit negative punishment. Humans use positive punishment methods, such as a sharp 'uh uh' or 'NO!', to stop a child, another adult or an animal, from continuing its current behaviour and change to a more acceptable behaviour. Simply ignoring the unwanted behaviour or offering an alternative reward may not be sufficient in all situations and may have disastrous welfare consequences. Imagine simply waiting for the child to stop running in the road of its own accord, or the puppy from chasing the cyclist, which is likely much more fun and rewarding than the ball or food treat you have to offer.

Positive reinforcement training should be the method used to teach new behaviours and the first option to encourage animals to make the right behaviour choices. In most situations, this will suffice. But sometimes we may need to say no. Positive punishment is part of the natural learning process and is in every owner's repertoire. However, if we do not understand about positive punishment, how can we explain its use and misuse to owners? Being uninformed increases the chance of making inappropriate choices about how to interact with an animal, and about where to seek help should problems arise. In this talk we will look at the role of negative and positive punishment in learning and how it can lead to problems, and how positive punishment could be used ethically and effectively, using the LIMA (Least Invasive, Minimally Aversive) principle.



Ana Barcelos | Cats Protection
Jenni McDonald | Cats Protection

Scientific advances in cat welfare from individualised care to population management

The welfare of domestic cats can be viewed through many lenses and at different scales. Here we highlight advances in scientific studies from the individual to the population and their combined application to real world scenarios.

Drawing from population modelling and cohort studies we take a holistic look at cat population management and the need to move away from a purely numbers approach to considering all different types of cats (owned, unowned and shelter) and their connections. Through neutering scenarios, we highlight the importance of studying domestic cat populations in their entirety to better understand factors influencing their dynamics and to guide management planning. Focussing on prepubertal neutering as an example, we discuss how scientific studies can explore welfare implications of interventions across a cat's lifetime.

In terms of individualised cat care, we discuss the importance of the assessment and management of the welfare of cats living in shelters, in the domestic home and unowned cats, and the need for stakeholder engagement to bridge the gap between scientific research and real-world applications. We will provide an update on the current shelter landscape in the UK including preliminary findings about the literature around welfare assessment of unowned cats. Finally, we will discuss the potential of novel methodologies and technologies including artificial intelligence to support non-invasive behaviour and welfare assessment as we look to the future of approaches which enable optimal management of populations, whilst also empowering people to meet the diverse requirements of individual cats effectively, using scientifically valid approaches.

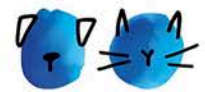
CREATING BETTER CITIES FOR PETS

Just 7% of rental properties in the UK are advertised as pet-friendly. Pet owners are having to choose between their pets and having a place to live, with 1 in 10 animals taken into *Battersea Dogs & Cats Home* to be rehomed as a result of tenancy restrictions or a lack of pet friendly rental properties.

Our Petiquette Guide for Rentals and Pet Ownership, created in partnership with *Battersea Dogs & Cats Home*, contains tips and advice for tenants and landlords on keeping pets in rental properties.

**A Better 
World For Pets**

MARS
Petcare



BATTERSEA
HERE FOR EVERY DOG AND CAT



VIEW OUR
PETIQUETTE GUIDE



Sessions & Speakers



Trudi Davison | EF Training
Ryan Lainchbury | EF Training

Recognising and responding to compassion fatigue

Are there times after work, especially when it's been a challenging and emotional day, that you feel anxious, find it hard to switch off, relax or sleep?

Are you aware there are times you are short tempered or can be unreasonable and small things irritate you?

Have you become aware of times when you are feeling detached or shut down?

Are you ever worried that the way you are feeling might be affecting the animals in your care, your colleagues or your family life?

Come along to this session and we will help you **RECOGNISE** what is causing these symptoms, why you are experiencing them and share with you ways you can **RESPOND** appropriately, enabling you to **RECOVER** and continue to enjoy the career that you love with empathy and compassion for yourself and the animals.



Rachel Bean RVN

Emergency first aid – in rescue

As a qualified Veterinary Nurse for over 25 years, I have experienced many first aid situations, including working overseas in Thai and Indian street dog shelters, and assisting with neutering clinics.

I want to bring you this experience and cover the common scenarios you may experience in rescue in the UK and the reality of how to deal with such scenarios.

I will also be covering CPR as this is a situation where you have to act quickly and with confidence.

This is will be an insightful and real life overview of first aid and you will find it very useful and informative. The deeper the knowledge and wider the firsthand experience, the more interesting and informative the teaching is, so I hope you enjoy my session.



Susie Hughes | RSPCA Manchester & Salford Branch

To pair, or not to pair: cat is the question!

In this workshop, we delve into the essential considerations for determining whether a cat is suitable to live harmoniously with another cat in a new home setting. The focus is on empowering attendees with the tools and confidence to make evidence-based assessments of cat compatibility.

We begin by examining the key factors that should influence our decision making, such as individual cat behaviour, temperament, back story and socialisation history. Drawing from insights in feline ethology and behaviour science, we provide attendees with a structured approach for evaluating a cat's potential to cohabit with another unfamiliar or unrelated cat.

Through case studies, participants will gain practical skills in observing and interpreting cat behaviour, enabling them to make informed decisions during the rehoming process.

Ultimately, "To pair, or not to pair, CAT is the question!" provides a framework for rescue staff and volunteers to evaluate cat compatibility with confidence, ensuring better outcomes for cats in the rehoming process.

We are **pets people**, and we know and understand the difference pets make to people's lives. That is why the Pets Foundation exists; to create a better world for pets and the people who love them. Our team of pet-loving colleagues, trustees and supporters are all dedicated to making a real difference by:

- Supporting pets and people through our various activities, including our grant programme, which covers:
 - Rescue and Rehoming
 - Preventing pet relinquishment
 - Pets assisting people
- Finding pets a forever-loving home through our adoption centres and community partners
- Working with partners to make a positive impact in local communities

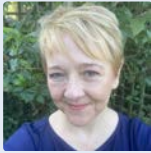
What we have achieved since we began our journey:

- Supported over 1,300 rescues
- Awarded over £34million through grant funding and partnerships
- Become the number one financial supporter of pet rescues in the UK
- Broadened our objectives to support those organisations that help people through pets





Sessions & Speakers



Emily Sockett | ADCH
Sarah Harper | ADCH Assessor & SAWC Member
Nicola White | ADCH Assessor, Trustee & SAWC Member

ADCH Assessors' workshop

Please be aware that this session is exclusively for ADCH Volunteer Assessors and Trainee Assessors.

Our volunteers are invited to join us for our annual ADCH Assessors' Workshop. You'll have the opportunity to network, share experiences and top tips, and receive support from our staff and Standards and Animal Welfare Committee Members so that you can carry out ADCH Assessments with confidence, benefitting our Members and the animals in their care.

Interested in volunteering for ADCH as an Assessor? Contact us now on enquiries@adch.org.uk to find out more!



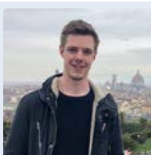
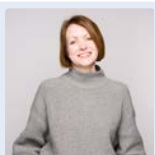
Stefan Blakiston Moore | Cats Protection
Justin Parsons | Cats Protection

Challenges to the sector – how does the rescue sector appeal to the next generation of pet owners?

Drawing insights from Cats Protection's annual "Cats and Their Stats" report, Stefan & Justin will be highlighting the shifting landscape of pet acquisition and running a workshop around how the rescue sector can effectively engage the next generation of pet owners.

With a new wave of pet enthusiasts emerging that are less likely to adopt their pets, they will be posing the question of whether we need to adapt to ensure we stay relevant to this new demographic of pet owners.

Prepare to be inspired, challenged, and collaborate with your peers in crafting innovative solutions to navigate the shifting trends of pet adoption.



Lorna Catling | Mars Petcare
Ben Parker | Battersea

Pet friendly properties – what challenges remain?

Mars Petcare and Battersea Dogs & Cats Home are delivering this session on the issue of pets and housing. Issues relating to housing remain a huge challenge for rescues across the country, and is the second most common reason that dogs and cats are relinquished to Battersea. But it doesn't have to be like this. Mars and Battersea are committed to working together to end pet homelessness, and ensuring that pets can get the care they need whether their owner owns or rents their home.

We know that 76% of tenants either already own or aspire to own a pet in the future. Yet just 8% of properties on the portal site Zoopla are listed as pet friendly. Something clearly needs to change.

It has long been established that pet ownership can provide huge benefits for the physical and mental health of owners. New research commissioned by Battersea now shows that there are also significant economic benefits to supporting pets in homes too, with the total monetary benefits to landlords of letting to tenants with pets exceeding the associated costs.

In this session, Mars and Battersea will provide updates on their respective campaigns, share findings from the new research, provide an update on the political context around planned legislative reforms to support more pets in homes, and look ahead to the General Election and what that might mean for the pets and housing agenda.

GROSVENOR VAT CONSULTANTS

£3 MILLION VAT REFUNDS FOR ARCS

We have been providing specialist VAT advice to Animal Rescue charities (ARC) for over 20 years. During this time we have acted for over 50 ARCs, Small, Medium and Large.

The success of our advice is reflected in the huge level of VAT refunds obtained for delighted clients, who all provide testimonials.

Our advice is legitimate and prudent, supported as it is by judge's rulings in the VAT Tribunal, applying to new and existing registrations.

Our contingency fee structure, ensures that no fees are payable unless we successfully obtain VAT refunds.

Please find out by contacting us under no obligation:

Please speak to Mike Payne, who has run Grosvenor VAT Consultants for over 20 years, on 07818 062915/mike@payne-consultants.co.uk

Can your charity afford not to find out more?



We are...

The Muzzle Movement

We have a *beautiful* range of muzzles designed by a **behaviourist**, with dog **welfare, comfort and safety** in mind! We are passionate about **ethical, force-free training methods** and aim to support dog professionals and guardians with all things muzzle! 🐾 🐾 🐾 🐾 🐾

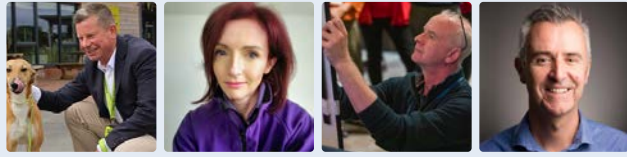
Find us at **ADCH Conference** to discover how we can help you and to see our Professional Bundles - the ideal choice for rescues!

www.themuzzlemovement.com





Sessions & Speakers



Giles Webber | Birmingham Dogs Home
Fi Harrison | Birmingham Dogs Home
Iain Atkin | Oxfordshire Animal Sanctuary
Stuart McCarthy-Thompson | Hope Rescue

Protecting your rescue

During this session a panel of speakers from member organisations will tell us about how they have defended their rescue against adverse publicity.

The modern world makes it very easy for anyone to make public what they think about an issue, or any interaction that did not result in the outcome that they wanted. This is a difficult topic that many organisations will face at some point, whilst simultaneously trying to carry on vital work looking after dogs and cats in their care.

Our members will take turns in highlighting some particular challenges and scenarios they have faced, how they have handled these, and their advice for other rescues.



Mike Webb | Battersea
Stefan Blakiston-Moore | Cats Protection

Licensing and beyond: the legislative challenges facing rescues

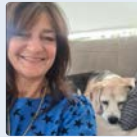
Come and join Battersea and Cats Protection as we give an update, with one eye on the upcoming UK General Election, on all matters legislative and political affecting our sector and how the law is changing to protect animals. This is a chance to have your say not only on these issues, but also how you feel ADCH is representing your needs, and whether there are new ways you feel the Association and its Legislative Committee could help.

The Election has to be held by January 2025, and there are a lot of issues hanging in the balance – Mike and Stefan will try and cut through the politics to make sense of what will, or won't, be delivered by the time the UK goes to the polls.

Starting off with a discussion of where we stand with licensing of rescues in the different nations covered by ADCH, and a reflection on how it is working in Scotland, we will give members the facts they need to stay one step ahead of upcoming political developments. Among other issues we will be looking at XL Bullies, upcoming changes to microchipping for dogs and cats, puppy and kitten smuggling, and the future of breeding regulations. We will also be discussing how ADCH rescues can work with their local candidates, and help ensure the next Parliament is even more sympathetic to the vital work we do for animals.



Sessions & Speakers



David Allen | RSPCA
Anna Baggott | PDSA
Kerry Taylor | Blue Cross
Louise Doran | Dogs Trust
Siobhan McHaffie | USPCA
Shelley Brown | Cats Protection
Chris Bennett | Woodgreen Pets Charity

Pet Education Partnership

In January 2022, companion animal charity executives challenged their education departments to determine how they could improve collaboration and establish more efficient ways of working. The overarching objective was to improve the scale, impact and effectiveness of the animal welfare sector's current education offerings for schools and uniform youth groups. The education teams were asked to consider how this could be best achieved, and how the current resources available for this work could be deployed to optimise the collaborative impacts.

The education specialists from each organisation (PDSA, Blue Cross, RSPCA, Dogs Trust, Cats Protection and Woodgreen Pets Charity) formed a working group for this task and The Pet Education Partnership (aka PEP) was born. In May 2023, we were delighted to welcome USPCA to PEP and then in June we welcomed the Scottish SPCA to the partnership to help us to reach children right across the UK.

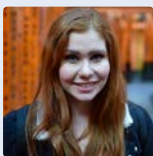
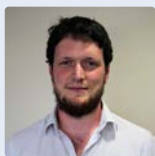
This presentation and Q and A will discuss the vision, mission and objectives for the PEP group, share the work of our first two years and goals for 2024 alongside discussing the successes, challenges and opportunities for cross-charity collaboration working.



Tom Candy | Dogs Trust

Meeting dogs' needs in a kennel environment

Kennels can be a challenging environment for dogs, regardless of their background and history. One of the best ways we can help support dogs in these environments is by meeting their needs. To fully meet the needs of our canine companions we first need to understand what they are. This talk serves as an introduction to the wider need of dogs and how this relates to spending time in kennels, before discussing what we can do to ensure we are meeting those needs in the most effective way as possible. The aim of this talk is to leave you with knowledge and practical applications of that knowledge to take back and implement in your shelters to improve welfare for the animals in your care.



Daniel Cummings | Cats Protection
Sammie Ravenscroft | Cats Protection

Unlocking the secret formula that sets cats up to succeed

Feline behaviour experts Sammie and Daniel are delivering a case-study led presentation that focuses on the single greatest tool that we can utilise to ensure the best long-term welfare of cats in the home environment.

You'll laugh, you'll cry, you'll learn - join the rest of the UK's greatest cat lovers at this short and sweet session.



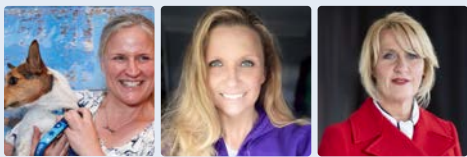
Sessions & Speakers



Adam Clowes | Dogs Trust
Heather Wren | Dogs Trust
Caroline Allen | RSPCA

Euthanasia: how to make difficult decisions based on fact, not emotion

Euthanasia is a complex and often emotionally charged, but vitally important, aspect of animal welfare and shelter management. This conference session aims to examine the intricacies of euthanasia decision-making processes, focusing on ethical considerations, practical guidelines, and strategies to ensure the well-being of animals and teams throughout the process. The session will examine animal factors and external factors that need to be considered. The session aims to set up topics for discussion and allow time for conversation so that different perspectives can be explored in a safe environment



Alyson Jones | Blue Cross
Heather Saville | Saints Sled Dog Rescue
Tara Cunningham | Causeway Coast Dog Rescue

Changing environments – exploring different models of rehoming

We are facing the biggest challenge the sector has seen for years. As demand for help is on the rise and the welfare sector changes beyond recognition, we have to adapt to meet customer expectations as well as helping pets in crisis, cutting our costs and providing good quality welfare standards. In this session we'll be hearing from three speakers on their experiences of rehoming without a reliance of pets living in a "traditional" rescue facility.

Alyson from Blue Cross will talk about creating a structure to support a hybrid approach running both a home based and traditional "onsite" services. Tara from Causeway Coast Dog Rescue will cover how the rescue developed a multidisciplinary approach with foster homes and commercial boarding facilities, enabling the continuation of support to those wishing to surrender dogs, while still within the membership remit of the ADCH; and Heather from Saints Sled Dog Rescue tells us about how the charity pioneered innovative approaches to support volunteers across the UK, ensuring the welfare of both foster families and rescue dogs alike. Heather will touch on the positives of foster-based rescue through a network of dedicated volunteers, and also look at the emotional toll on foster families, the logistical complexities of coordinating placements and the idealised view of the role of a foster carer.



Rebecca Hollingworth | The Sheffield Cats Shelter

Working with cats in our community

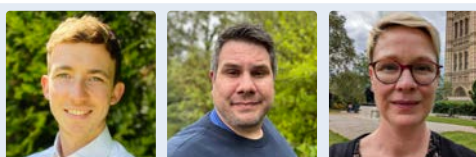
In this session we will be finding out how two ADCH members came together locally to improve the lives of animals in their community. The Sheffield Cats Shelter and Rain Rescue came together in the South Yorkshire area to run a microchipping programme for local owned cats in the region, as well as further advice on cat welfare and care, and support with neutering and other veterinary costs. The events offered a free microchipping service with a donation being optional. Members of the community could have their cats microchipped and registered, ready for the new legislation coming into effect this year. We will hear about the benefits of working together, how the rescues got started with these events, their plans for the future, and how they've measured their successes. The Sheffield Cats Shelter and Rain Rescue have also gone on to support other cats without bringing them into rescue and we'll learn more about the power of partnership and working in the community for relinquishment prevention too.



Ruth De Vere | Battersea
Peter Laurie | Battersea

Is the sector professional and sustainable? Presenting the research findings

Battersea believes that the rehoming sector (globally) plays an important role in society, and one that is based on trust. In order to be trusted, the sector needs to be professional and financially sustainable. With the help of an agency called I.G Advisors, and rehoming organisations across the UK and other countries, Battersea co-created a framework to measure Professionalism and Sustainability. Last year we launched the research project and ADCH attendees were invited to participate. This year we're back to share the results. We share the UK scores, and launch the report that shows the results for Greece and South Africa too. We also describe how Battersea is working to meet some of the challenges and opportunities identified in the research, to support the sector to achieve an even greater impact for dogs and cats.

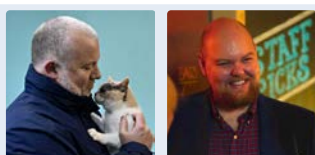


George Bloor | Dogs Trust
Glenn Mayoll | RSPCA
Vanessa Whitfield | RSPCA

Shelter metrics: how to get the most throughput in your shelter and increase your rehoming

How do you use data in your organisation to inform your decision making? How relevant do you think data is in managing the welfare of your dogs and cats?

In this session we will look to explore the science of shelter metrics and how you can use data to inform your decision making to improve rehoming, and ultimately animal welfare. The session will look at the science and then explore some of the tools Dogs Trust and the RSPCA have developed to inform decision making. Key to this session is the collaboration between our clinical teams, behaviour teams, and vets, alongside our operational colleagues.



Chris Bray | Newcastle Dog & Cat Shelter
Iain Riddell | Newcastle Dog & Cat Shelter

Fundraisers' Forum

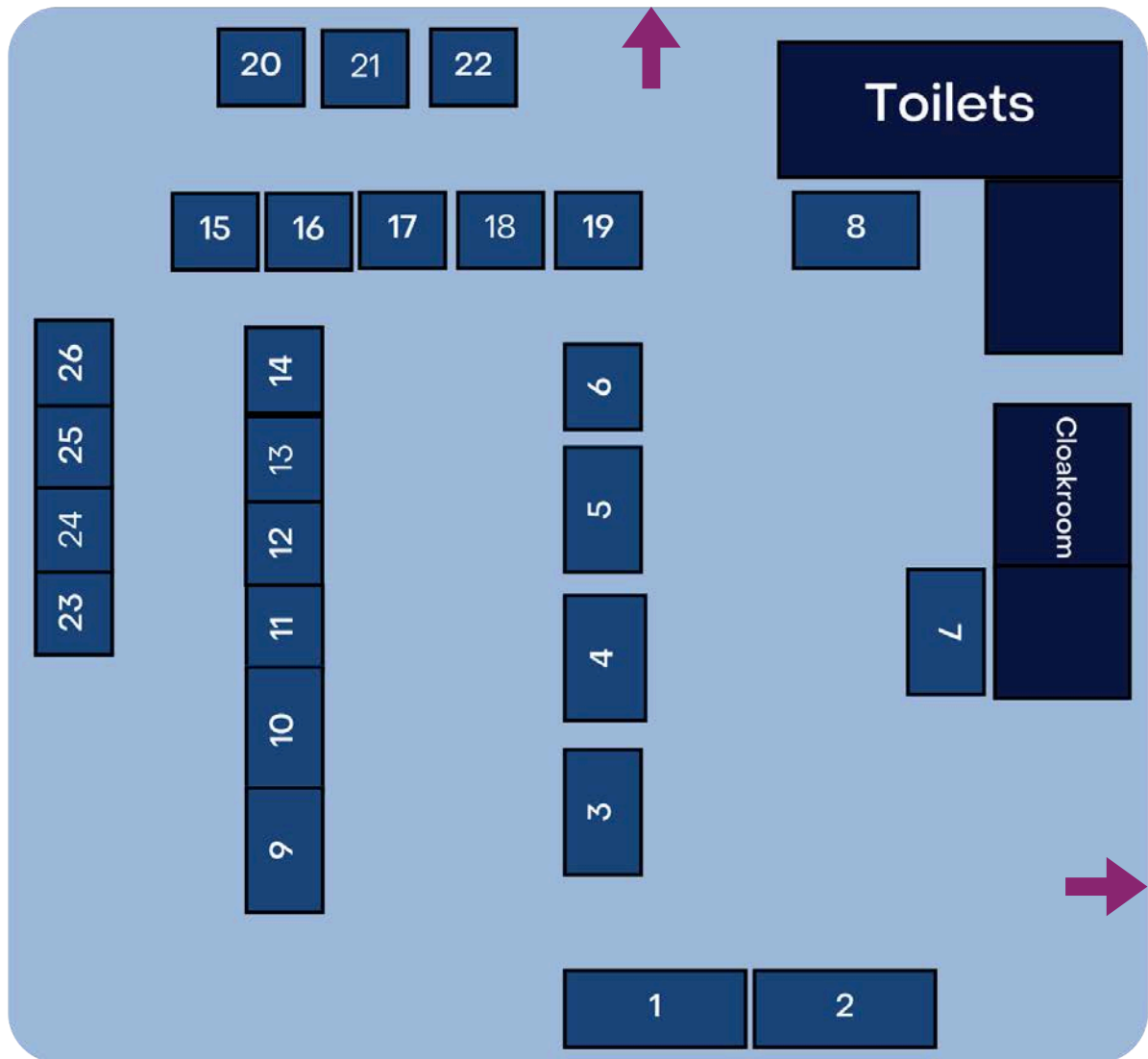
Join Chris Bray and Iain Riddell from the Newcastle Dog and Cat Shelter as they delve into their fundraising journey and unveil their plans for the upcoming year.

This is an opportunity for open dialogue between those with a responsibility for fundraising. Share your insights, ideas, and even frustrations in a collaborative environment. What strategies are proving successful? What challenges are being faced, and how can they be overcome? The session will also include the use of AI in fundraising.

This session also offers an opportunity to connect with like-minded professionals and exchange contacts for future collaboration and support.

Exhibition Area

Hall 3 (catering & refreshments)



Beckbury & Potttingham

1 Petplan

2 Battersea

3 RSPCA

4 Dogs Trust

5 Cats Protection

6 CatKind

7 Woodgreen Pets Charity

8 Mars Petcare

9 Pets Foundation

10 Royal Canin

11 Byotrol Technology Ltd

12 TECHNIK Veterinary

13 Pet-ID Microchips Ltd

14 MDC Exports

15 ACD Projects Ltd

16 Agria Pet Insurance

17 Vetplus

18 Safe Solutions (Safe4) Ltd

19 AVID MicroChips & PETtrac Database

20 AniLog® Animal Welfare Management Software

21 Citation

22 Pet Remedy

23 The Muzzle Movement

24 PeddyMark Limited

25 Animal Care Network Ltd

26 GiveCircle

— Sponsors —

Petplan

Petplan[®]

PETPLAN & ADCH
ANIMAL CHARITY
AWARDS PARTNER

Battersea



PLATINUM SPONSOR

Cats Protection



STREAM SPONSOR

Dogs Trust



STREAM SPONSOR

RSPCA

RSPCA.

STREAM SPONSOR

Woodgreen Pets Charity



FRINGE EVENT
SPONSOR

Mars Petcare



GOLD SPONSOR

Birmingham Dogs Home



GOLD SPONSOR

Pets Foundation

Pets
Foundation

SILVER SPONSOR

Royal Canin



SILVER SPONSOR

AVID MicroChips & PETtrac Database



LUNCH &
REFRESHMENT
SPONSOR

Safe4

Safe4
The Professional Solution

HAND SANITISER
SPONSOR

Agria Pet Insurance

Agria
Pet Insurance

BRONZE SPONSOR

ACD Projects



BRONZE SPONSOR

Byotrol



BRONZE SPONSOR

MDC Exports



BRONZE SPONSOR

Pet ID Microchips



BRONZE SPONSOR

Pet Remedy

pet remedy
natural calming & emotional wellbeing

BRONZE SPONSOR

Technik

TECHNIK

BRONZE SPONSOR

VetPlus

VetPlus

BRONZE SPONSOR

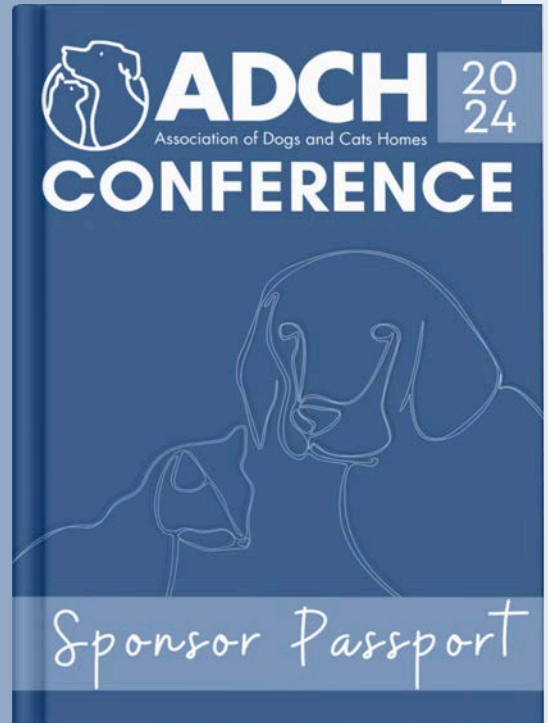
Sponsor Passport

Visit our esteemed sponsors and collect stamps along the way!

Each stamp brings you closer to winning great prizes, including a complimentary ticket to the ADCH Conference 2025.

After gathering all the stamps and adding your details to the form, post in the box at the ADCH Reception desk by 12:40pm on Wednesday 15th May. Winners will be selected at random during the closing remarks in Ironbridge

Remember, you must be present in the room to claim your prize, so don't miss out on the excitement!



—Exhibitors—

AniLog



Animal Care Network



Cat-Kind



Citation



GiveCircle



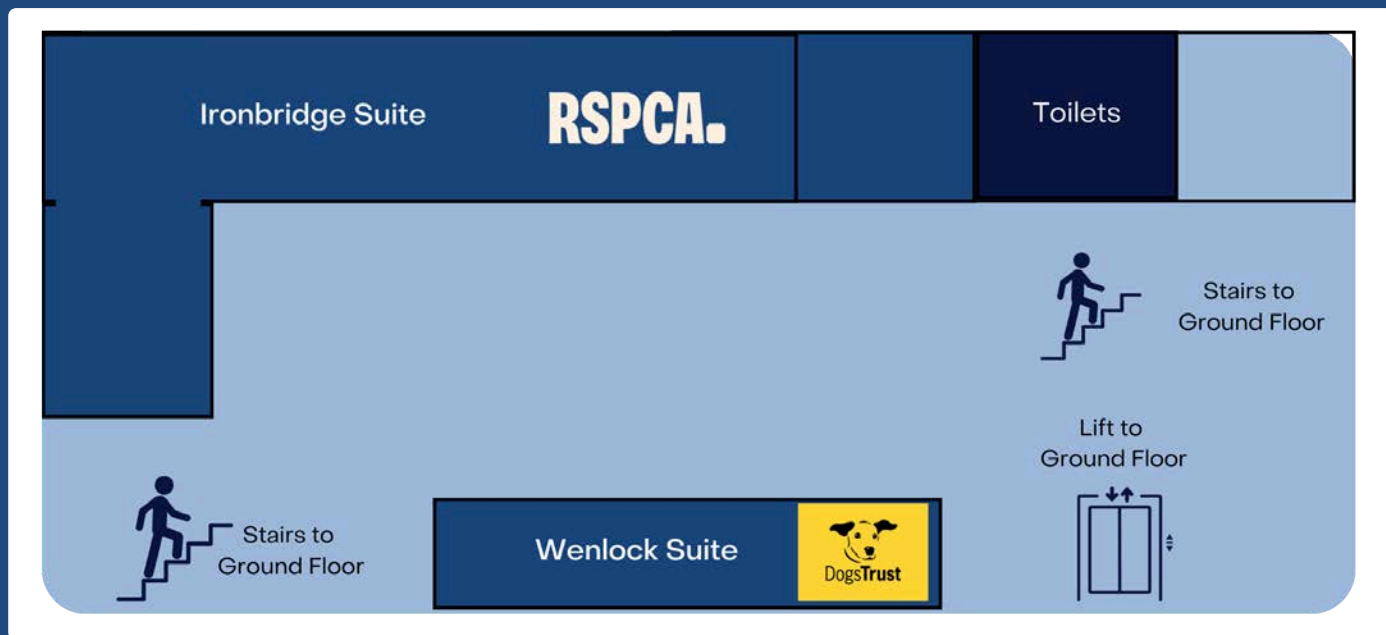
PeddyMark



The Muzzle Movement



First Floor



Ground Floor

